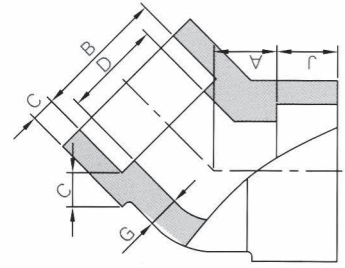


Conexiones **REYCO**

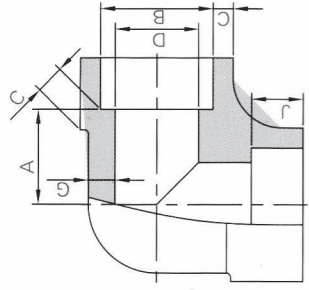
*es tu marca de confianza
en conexión de alta presión
3 mil y 6 mil lbs
en acero al carbón forjado
y acero inoxidable forjado*



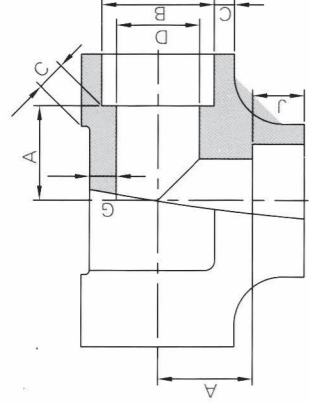
REYCO
FORGED STEEL FITTINGS



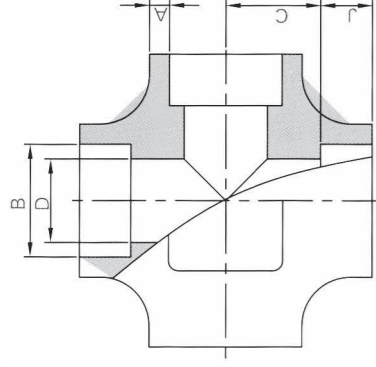
Codo 45°



Codo 90° SW

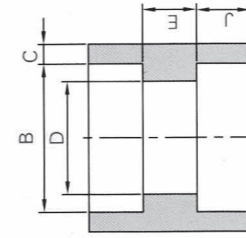


Tee SW

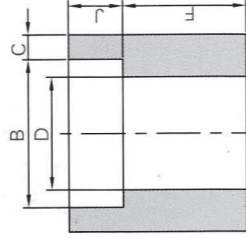


Cruz SW

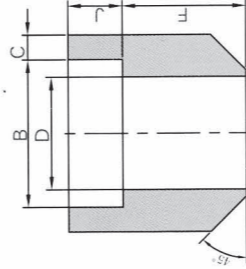
Diámetro Nominal	Diámetro Interior	Diámetro Interior del Tubo	Espesor de Caja p/Soldar						Cuerpo de la Pared		Profundidad de Caja	Centro a Base del Interior					
			3000		6000		9000		G _{min}			J _{min}	90° Codo, Tees, Cruces		Codo 45°		
DN	NPS	B	ave	min	ave	min	ave	min	ave	min	ave		min	ave	min	ave	min
6	1/8	10.9	3.18	3.18	3.96	3.43	-	2.41	3.15	-	2.41	11.0	11.0	8.0	8.0	-	-
8	1/4	14.3	3.78	3.30	4.60	4.01	-	3.02	3.68	-	3.02	11.0	13.5	8.0	8.0	-	-
10	3/8	17.7	4.01	3.50	5.03	4.37	-	3.20	4.01	-	3.20	13.5	15.5	8.0	11.0	-	-
15	1/2	21.9	4.67	4.09	5.97	5.18	9.53	8.18	4.78	7.47	9.53	15.5	19.0	11.0	25.5	11.0	12.5
20	3/4	27.3	4.90	4.27	6.96	6.04	9.78	8.56	5.56	7.82	12.5	19.0	22.5	13.0	28.5	13.0	14.0
25	1	34.0	5.69	4.98	7.92	6.93	11.38	9.96	6.35	9.09	12.5	22.5	27.0	14.0	32.0	14.0	17.5
32	1-1/4	42.8	6.07	5.28	7.92	6.93	12.14	10.62	4.85	9.70	12.5	27.0	32.0	17.5	35.0	17.5	20.5
40	1-1/2	48.9	6.35	5.54	8.92	7.80	12.70	11.12	5.08	10.15	12.5	32.0	38.0	20.5	38.0	20.5	25.5
50	2	61.2	6.93	6.04	10.92	9.50	13.84	12.12	5.54	11.07	16.0	38.0	41.0	25.5	54.0	25.5	28.5



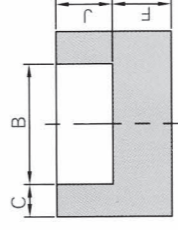
Cople SW



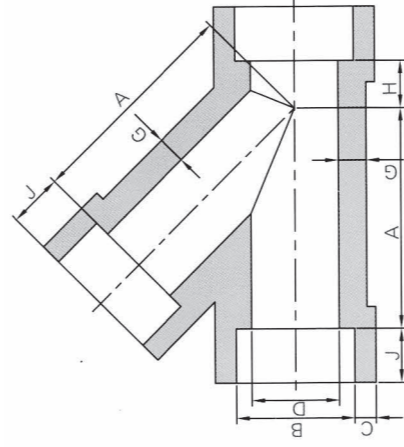
Medio Cople SW



Inserto SW

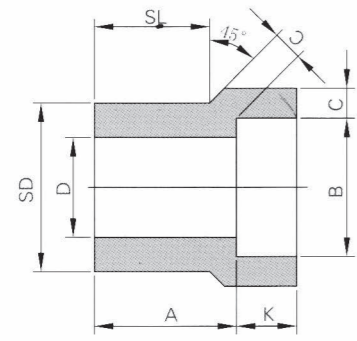


Tapón cachucha

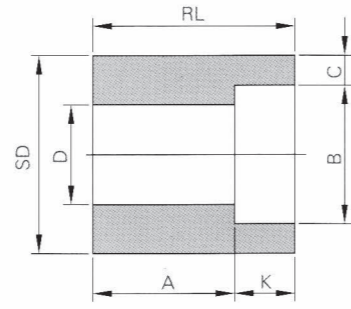


Yee a 45° SW

Diámetro Nominal	Diámetro Interior	Diámetro Interior del Tubo	Espesor de Caja p/Soldar						Cuerpo de la Pared		Prof. de Caja	Longitud del Tubo	Longitud del Tubo	Grosor del Final	Centro a Fondo de Caja		
			3000		6000		9000		G _{min}						E	F	K _{min}
NPS	B	ave	min	ave	min	ave	min	ave	min	ave	min	ave	min	ave			
6	1/8	10.9	3.18	3.18	3.96	3.43	-	2.41	3.15	-	2.41	6.5	6.5	4.8	6.4	-	-
8	1/4	14.3	3.78	3.30	4.60	4.01	-	3.02	3.68	-	3.02	6.5	6.5	4.8	6.4	-	-
10	3/8	17.7	4.01	3.50	5.03	4.37	-	3.20	4.01	-	3.20	6.5	6.5	4.8	6.4	-	-
15	1/2	21.9	4.67	4.09	5.97	5.18	8.18	7.47	4.78	7.47	8.18	9.5	9.5	6.4	7.9	11.2	41
20	3/4	27.3	4.90	4.27	6.96	6.04	9.78	8.56	5.56	7.82	9.53	9.5	9.5	6.4	7.9	12.7	51
25	1	34.0	5.69	4.98	7.92	6.93	11.38	9.96	6.35	9.09	12.5	12.5	9.6	11.2	14.2	60	
32	1-1/4	42.8	6.07	5.28	7.92	6.93	12.14	10.62	4.85	9.70	12.5	12.5	9.6	11.2	14.2	71	
40	1-1/2	48.9	6.35	5.54	8.92	7.80	12.70	11.12	5.08	10.15	12.5	12.5	9.6	11.2	14.2	81	
50	2	61.2	6.93	6.04	10.92	9.50	13.84	12.12	5.54	11.07	16.0	16.0	12.7	15.7	19	98	



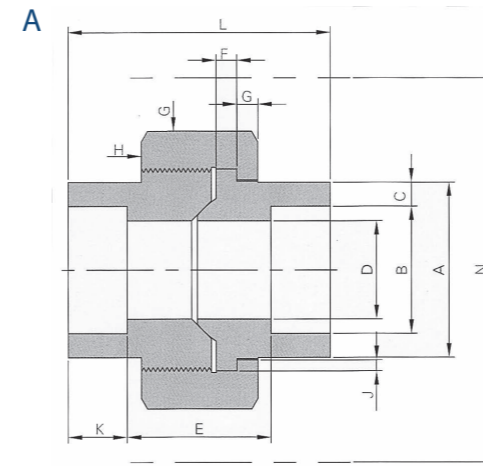
Tipo 1



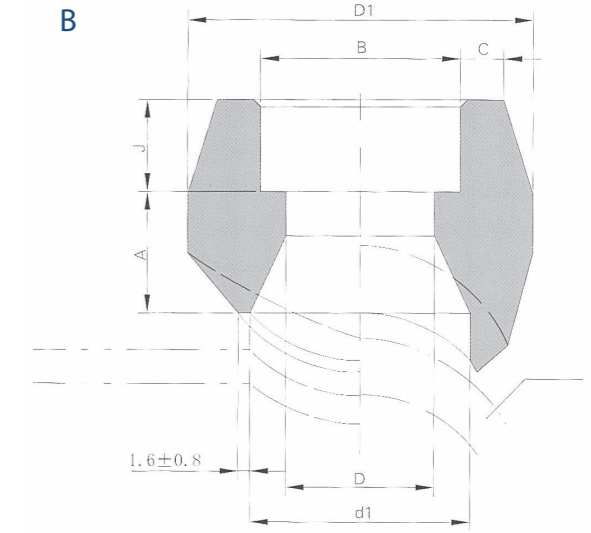
Tipo 2

Diámetro Nominal		Tipo		Diámetro Interior	Profundidad de Caja	Diámetro de Rosca	Longitud del Tubo		Diámetro Interior del Tubo		Pared	
DN	NPS	3000	6000	B	Kmin	SD	A	D	Cmin			
										30000	60000	
10x8	3/8 x 1/4	1	1	14.3	9.5	17.1	19.1	21.3	9.2	6.4	3.8	4.6
15x10 x8	1/2x3/8 x1/4	1	1	17.7	9.5	21.3	20.6	23.1	12.5	9.1	4.0	5.0
		1	1	14.3	9.5	21.3	20.6	20.6	9.2	6.4	3.8	4.6
20x15 x10	3/4x1/2 x3/8	1	1	21.9	9.5	26.7	22.4	25.4	15.8	11.8	4.7	6.0
		2	1	17.7	9.5	26.7	15.7	22.4	12.5	9.1	4.0	5.0
25x20 x10	1x3/4 x1/2	1	1	27.3	12.5	33.4	23.9	28.5	20.9	15.5	4.9	7.0
		2	1	21.9	9.5	33.4	15.7	28.5	15.8	11.8	4.7	6.0
32x25 x20	1-1/4x1 x3/4	1	1	34.0	12.5	42.2	23.9	28.5	20.9	15.5	4.9	7.0
		2	1	27.3	12.5	42.2	17.5	20.6	20.9	15.5	4.9	7.0
40x32 x25	1-1/2x1-1/4 x1	1	1	42.8	12.5	48.3	25.4	30.2	26.6	20.7	5.7	7.9
		2	1	34.0	12.5	48.3	17.5	26.6	26.6	20.7	5.7	7.9
50x40 x32	2x1-1/2 x1-1/4	1	1	48.9	12.5	60.3	25.4	30.2	26.6	20.7	5.7	7.9
		2	1	42.8	12.5	60.3	22.4	25.4	26.6	20.7	5.7	7.9
65x50 x40	2-1/2x2 x1-1/2	1	1	61.4	16.0	73.0	23.9	26.9	20.9	15.5	4.9	7.0
		2	1	48.9	12.5	73.0	22.4	25.4	20.9	15.5	4.9	7.0
80x65 x50	3x2-1/2 x2	1	1	74.1	16.0	88.9	25.4	28.5	15.8	11.8	4.7	6.0
		2	1	61.4	16.0	88.9	22.4	25.4	15.8	11.8	4.7	6.0
100x90 x75	4x3-1/2 x3	1	1	91.4	16.0	107.8	31.8	35.9	26.6	20.7	6.4	8.9
		2	1	74.1	16.0	107.8	28.5	31.8	26.6	20.7	6.4	8.9
125x100 x90	5x4-1/2 x4	1	1	101.6	16.0	118.2	38.1	42.2	26.6	20.7	7.9	10.9
		2	1	84.3	12.5	118.2	31.8	35.9	26.6	20.7	6.4	8.9

DE: DIÁMETRO EXTE-



Unión SW clase 3 mil



Socketlet

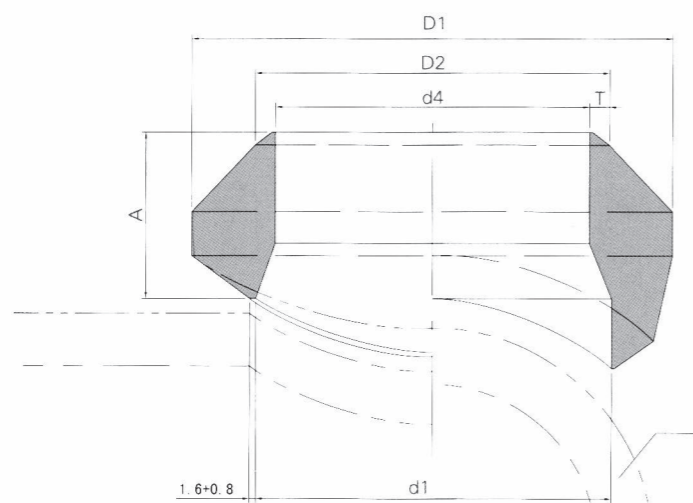
MSS SP-97

Diámetro Nominal	Final del Tubo	Diámetro Interior	Pared de Caja	Paso	Longitud del Tubo	Brida Macho	Tuerca	Asiento	Profundidad de Caja	Largo	Claro de Tuerca	
DN	NPS	Amin	Bmin	Cmin	D	E	Fmin	Gmin	Jmin	Kmin	Lmon	N
6	1/8	21.8	10.9	3.2	6.1	20.7	3.2	3.2	1.2	9.7	41.4	51
8	1/4	21.8	14.3	3.3	8.5	20.7	3.2	3.2	1.2	9.7	41.4	51
10	3/8	25.9	17.7	3.5	11.8	23.8	3.4	3.4	1.4	9.7	46	56
15	1/2	31.2	21.9	4.1	15	23.8	3.7	3.7	1.5	9.7	49	59
20	3/4	37.1	27.3	4.3	20.2	28.6	4.1	4.1	1.7	12.7	56.9	66
25	1	45.5	34	5	25.9	30.2	4.6	4.4	1.9	12.7	62	79
32	1-1/4	54.9	42.8	5.3	34.3	36.6	5.3	5.2	2.1	12.7	71.1	94
40	1-1/2	61.5	48.9	5.5	40.1	38.1	5.8	5.6	2.3	12.7	76.5	112
50	2	75.2	61.2	6	51.7	41.4	6.6	6.4	2.7	15.7	86.1	132
65	2-1/2	91.7	73.9	7.7	61.2	56.9	7.5	7.1	3.1	15.7	102.4	150

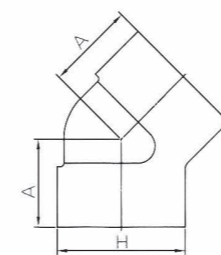
MSS SP-83

Diámetro Nominal		Diámetro Nominal de la Salida		Prof. de Caja	Cara a Ranura		DE de Conexión		Espesor de Caja p/Soldar		Diámetro del Corte		
DN	NPS	DN	NPS	Jmin	Amax		D1min		Cmin		D1nom		
						3000	6000	3000	6000	3000	6000	3000	6000
8-900	1/4-36	6	1/8	9.5	10	-	27	-	3.18	-	16	-	
10-900	3/8-36	8	1/4	9.5	10	-	27	-	3.78	-	16	-	
15-900	1/2-36	10	3/8	9.5	13	-	30	-	4.01	-	19	-	
20-900	3/4-36	15	1/2	9.5	16	24	38	47	4.67	5.97	24	19	
25-900	1-36	20	3/4	12.5	16	25	47	53	4.90	6.96	30	25	
32-900	1-1/4-36	25	1	12.5	22	29	56	63	5.69	7.92	36	33	
40-900	1-1/2-36	32	1-1/4	12.5	22	30	66	74	6.07	7.92	45	38	
50-900	2-36	40	1-1/2	12.5	24	32	75	83	6.35	8.92	51	49	
65-900	2-1/2-36	50	2	16.0	24	37	90	104	6.93	10.92	65	59	
80-900	3-36	65	2-1/2	16.0	25	-	105	-	8.76	-	76	-	
100-900	4-36	80	3	16.0	30	-	124	-	9.52	-	94	-	
125-900	5-36	100	4	19.0	30	-	154	-	10.69	-	121	-	

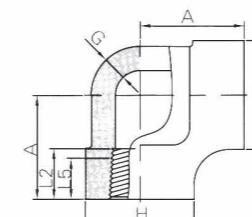
DE: DIÁMETRO EXTE-



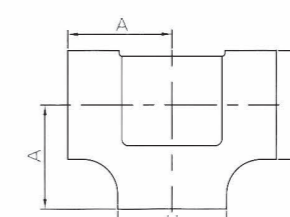
Weldolet



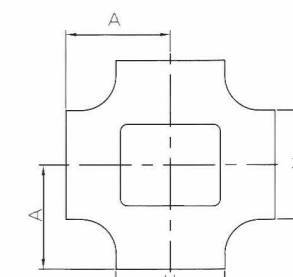
Codo 45° NPT



Codo 90° NPT



Tee NPT

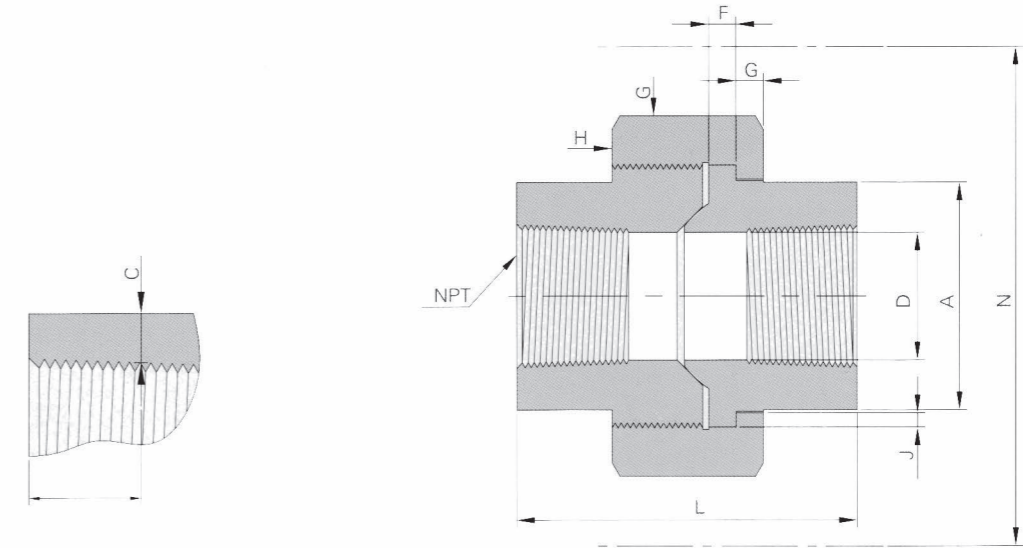
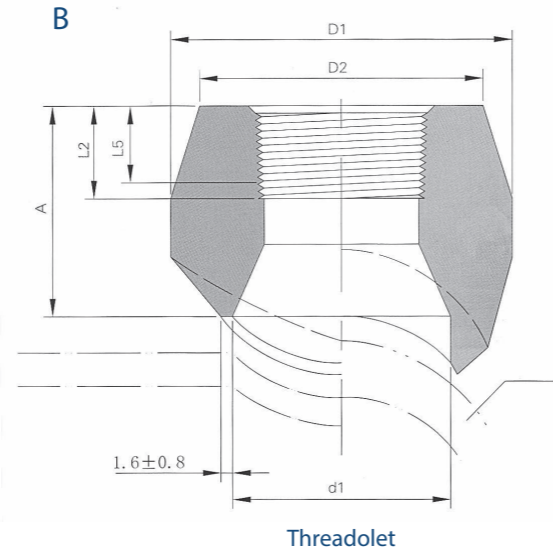
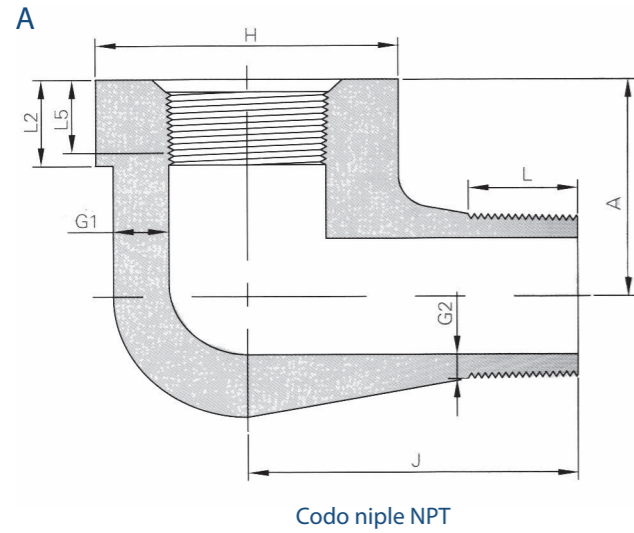


Cruz NPT

Diámetro Nominal		Diámetro Nominal de la Salida		Largo			DE de Conexión			Diámetro del Corte		
DN	NPS	DN	NPS	A			D2min			D1nom		
				STD	XS	SCH160	STD	XS	SCH160	STD	XS	SCH161
8-900	1/4-36	6	1/8	16	1/8	-	24	24	-	16	16	-
10-900	3/8-36	8	1/4	16	16	-	26	26	-	16	16	-
15-900	1/2-36	10	3/8	19	19	-	30	30	-	19	19	-
20-900	3/4-36	15	1/2	19	19	28	36	36	36	24	24	14
25-900	1-36	20	3/4	22	22	32	43	43	46	30	30	19
32-900	1-1/4-36	25	1	27	27	38	55	55	51	36	36	25
40-900	1-1/2-36	32	1-1/4	32	32	44	66	66	63	45	45	33
50-900	2-36	40	1-1/2	33	33	51	74	74	71	51	51	38
65-900	2-1/2-36	50	2	38	38	55	90	90	82	65	65	43
80-900	3-36	65	2-1/2	41	41	62	104	104	98	76	76	54
90-900	3-1/2-36	80	3	44	44	73	124	124	122	93	93	73
100-900	4-36	90	3-1/2	48	48	-	138	138	-	113	133	-
125-900	5-36	100	4	51	51	84	154	154	154	120	120	98
150-900	6-36	125	5	57	57	94	187	187	188	141	141	122
200-900	8-36	150	6	60	78	105	213	227	222	170	170	146
250-900	10-36	200	8	70	99	-	265	292	-	220	220	-
300-900	12-36	250	10	78	94	-	323	325	-	275	265	-
350-900	14-36	300	12	86	103	-	379	381	-	325	317	-
400-900	16-36	350	14	89	100	-	411	416	-	357	351	-
450-900	18-36	400	16	94	106	-	465	468	-	408	403	-
500-900	20-36	450	18	97	111	-	522	525	-	459	455	-
550-900	22-36	500	20	102	119	-	573	584	-	508	509	-
650-900	26-36	600	24	116	140	-	690	708	-	614	612	-

DE: DIÁMETRO EXTE-

Diámetro Nominal de la Tubería		Centro a Final						Diámetro Exterior de la Banda			Espesor Pared			Largo de la Rosca	
DN	NPS	A						H			Gmin			L5m	L2m
		90° Codo, Te, Cruz			45° Codos										
		2000	3000	6000	2000	3000	6000	2000	3000	6000	2000	3000	6000		
6	1/8	21	21	25	17	17	19	22	22	25	3.18	3.18	6.35	6.4	6.7
8	1/4	21	25	28	17	19	22	22	25	33	3.18	3.30	6.60	8.1	10.2
10	3/8	25	28	33	19	22	25	25	33	38	3.18	3.51	6.98	9.1	10.4
15	1/2	28	33	38	22	25	28	33	38	46	3.18	4.09	8.15	10.9	13.6
20	3/4	33	38	44	25	28	33	38	46	56	3.18	4.32	8.53	12.7	13.9
25	1	38	44	51	28	33	35	46	56	62	3.68	4.98	9.93	14.7	17.3
32	1 1/4	44	51	60	33	35	43	56	62	75	3.89	5.28	10.59	17.0	18.0
40	1 1/2	51	60	64	35	43	44	62	75	84	4.01	5.56	11.07	17.8	18.4
50	2	60	64	83	43	44	52	75	84	102	4.27	7.14	12.09	19.0	19.2



A- ASME B16.11

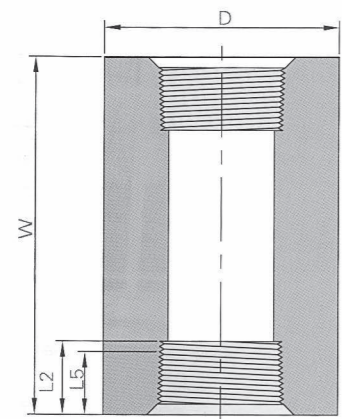
Diámetro Nominal		Punta a Punta		Centro a Rosca Macho		Diámetro Exterior de Salida Hembra		Grosor de la Pared		Espesor de la Pared		Largo del Tubo		Largo Rosca Macho
DN	NPS	A		J		H		G _{min}		G _{MIN}		L _{5min}	L _{2min}	L _{MIN}
		3000	6000	3000	6000	3000	6000	3000	6000	3000	6000			
6	1/8	19	22	25	32	19	25	3.18	5.08	2.74	4.22	6.4	6.7	10
8	1/4	22	25	32	38	25	32	3.30	5.66	3.22	5.28	8.1	10.2	11
10	3/8	25	28	38	41	32	38	3.51	6.98	3.50	5.59	9.1	10.4	13
15	1/2	28	35	41	48	38	44	4.09	8.15	4.16	6.53	10.9	13.6	14
20	3/4	35	44	48	57	44	51	4.32	8.53	4.88	6.86	12.7	13.9	16
25	1	44	51	57	66	51	62	4.98	9.93	5.56	7.95	14.7	17.3	19
32	1-1/4	51	54	66	71	62	70	5.28	10.59	5.56	8.48	17.0	18.0	21
40	1-1/2	54	64	71	84	70	84	5.56	11.07	6.25	8.89	17.8	18.4	21
50	2	64	83	84	105	84	102	7.14	12.09	7.64	9.70	19.0	19.2	22

B- MSS SP-97

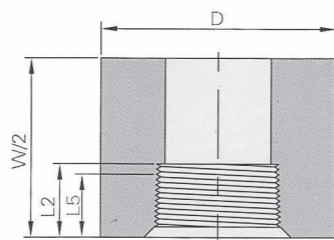
Diámetro Nominal		Diámetro Nominal de la Salida		Largo		DE de Conexión		DE de Salida		Largo del Tubo	Diámetro del Corte	
DN	NPS	DN	NPS	A _{max}		D _{1min}		D _{2min}		L _{2min}	D _{1nom}	
				3000	6000	3000	6000	3000	6000		3000	6000
8-900	1/4-36	6	1/8	19	-	27	-	22	-	6.7	16	-
10-900	3/8-36	8	1/4	19	-	27	-	22	-	10.2	16	-
15-900	1/2-36	10	3/8	21	-	30	-	25	-	10.4	19	-
20-900	3/4-36	15	1/2	25	32	38	45	33	42	13.6	24	19
25-900	1-36	20	3/4	27	37	47	52	39	48	13.9	30	25
32-900	1-1/4-36	25	1	33	40	56	63	48	58	17.3	36	33
40-900	1-1/2-36	32	1-1/4	33	41	66	72	58	67	18.0	45	38
50-900	2-36	40	1-1/2	35	43	75	83	64	77	18.4	51	49
65-900	2-1/2-36	50	2	38	52	90	104	77	93	19.2	65	59
80-900	3-36	65	2-1/2	46	-	105	-	94	-	28.9	76	-
100-900	4-36	80	3	51	-	124	-	114	-	30.5	94	-
125-900	5-36	100	4	57	-	154	-	140	-	33.5	121	-

DE: DIÁMETRO EXTE-

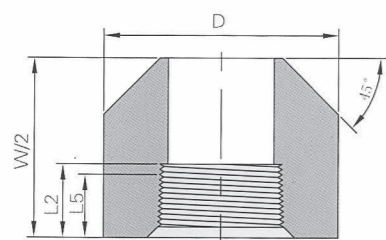
Diámetro Nominal	Final del Tubo	Pared	Hueco	Brida Macho	Tuerca	Rosca por Pulgada	Asiento	Largo	Claro de Tuerca	
DN	NPS	A _{min}	C _{min}	D	F _{min}	G _{min}	H	J _{min}	L _{nom}	N
6	1/8	14.7	2.4	8.4 6.4	3.2	3.2	16	1.2	41.4	51
8	1/4	19.1	3.0	11.1 9.4	3.2	3.2	16	1.2	41.4	51
10	3/8	22.9	3.2	14.3 13.5	3.4	3.4	14	1.4	46.0	56
15	1/2	27.7	3.7	17.9 17.1	3.7	3.7	14	1.5	49.0	59
20	3/4	33.5	3.9	23.0 21.4	4.1	4.1	11	1.7	56.9	66
25	1	41.4	4.5	29.0 27.7	4.6	4.4	11	1.9	62.0	79
32	1-1/4	50.5	4.9	37.7 35.4	5.3	5.2	10	2.1	71.1	94
40	1-1/2	57.2	5.1	43.5 41.2	5.8	5.6	10	2.3	76.5	112
50	2	70.1	5.5	55.6 52.1	6.6	6.4	10	2.7	86.1	132
65	2-1/2	85.3	7.0	66.3 64.3	7.5	7.1	8	3.1	102.4	150
80	3	102.4	7.6	82.6 77.3	8.3	8.0	8	3.5	109.0	176



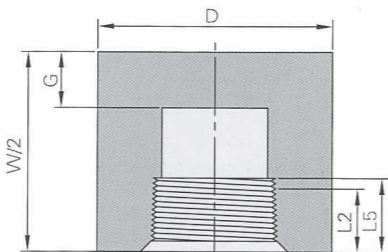
Cople NPT



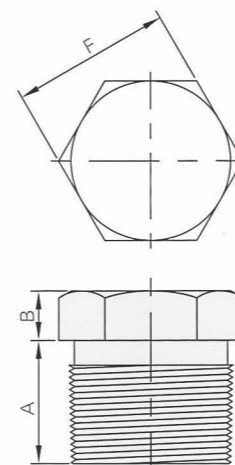
Mediocople



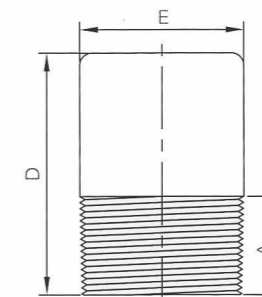
Inserto NPT



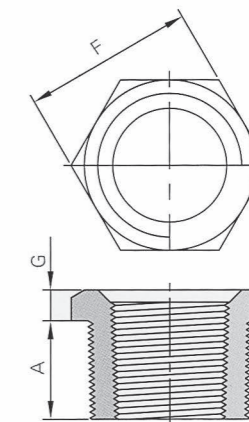
Tapón Cachuca



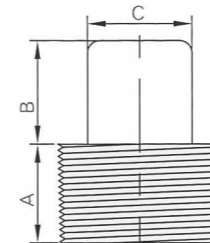
Tapón Macho Cab.



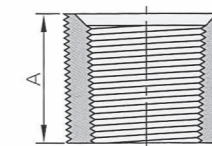
Tapón Macho Cab. Re-



Reducción Bushing



Tapón Macho Cab.



Blushing Lisa

Diámetro Nominal		Punta a Punta	Punta a Punta		Diámetro Exterior		Fin Pared		Largo Rosca Macho	
DN	NPS	W	P		D		G _{min}		L _{5min}	L _{2min}
		3000&6000	3000	6000	3000	6000	3000	6000		
6	1/8	32	19	-	16	22	4.8	-	6.4	6.7
8	1/4	35	25	27	19	25	4.8	6.4	8.1	10.2
10	3/8	38	25	27	22	32	4.8	6.4	9.1	10.4
15	1/2	48	32	33	28	38	6.4	7.9	10.9	13.6
20	3/4	51	37	38	35	44	6.4	7.9	12.7	13.9
25	1	60	41	43	44	57	9.7	11.2	14.7	17.3
32	1-1/4	67	44	46	57	64	9.7	11.2	17.0	18.0
40	1-1/2	79	44	48	64	76	11.2	12.7	17.8	18.4
50	2	86	48	51	76	92	12.7	15.7	19.0	19.2
65	2-1/2	92	60	64	92	108	15.7	19.0	23.6	28.9
80	3	108	65	68	108	127	19.0	22.4	25.9	30.5
100	4	121	68	75	140	159	22.4	28.4	27.7	33.0

Diámetro Nominal		Largo	Alto del Cuadro	Ancho de Cab. Cuad.	Diámetro de la Cabeza	Largo	Altura Cab. Hexagonal	Altura Cab. Hexagonal	Ancho de Cab. Hex.
DN	NPS	A _{min}	B _{min}	C _{min}	E _{min}	D _{min}	H _{min}	G _{min}	F _{min}
6	1/8	10	6	7	10	35	6	-	11
8	1/4	11	6	10	14	41	6	3	16
10	3/8	13	8	11	18	41	8	4	18
15	1/2	14	10	14	21	44	8	5	22
20	3/4	16	11	16	27	44	10	6	27
25	1	19	13	21	33	51	10	6	36
32	1-1/4	21	14	24	43	51	14	7	46
40	1-1/2	21	16	28	48	51	16	8	50
50	2	22	18	32	60	64	18	9	65
65	2-1/2	27	19	36	73	70	19	10	75
80	3	28	21	41	89	70	21	10	90
100	4	32	25	65	114	76	25	13	115



REYCO
FORGED STEEL FITTINGS

es tu marca de confianza

Calidad REYCO avalada por:

